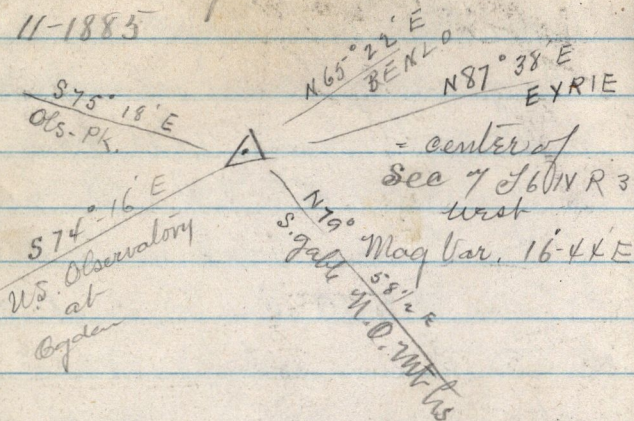


## Survey on Little Mountain

May 11-1885



Benlo - North Ogden Meeting house	$14^{\circ} 37'$
N.O. Mills - Eyria Peak	$7^{\circ} 39'$
Eyria - Obs. PK.	$17^{\circ} 3'$
Eyria - U.S. Obs. 1	$18^{\circ} 4 \frac{1}{2}'$

Note on C. P. R.R. land maps it is  
 $8^{\circ} 00'$  chain W. from N.W. cor Sec 7 to the  
 Lake +  $38.00'$  from S.W. cor of sec 7  
 + 0. ch N. to lake from N.W. cor sec 7  
 + 70. ch N. from